

# **BOARD POLICY**

Placentia-Yorba Linda Unified School District

---

Administration

2410 - BP

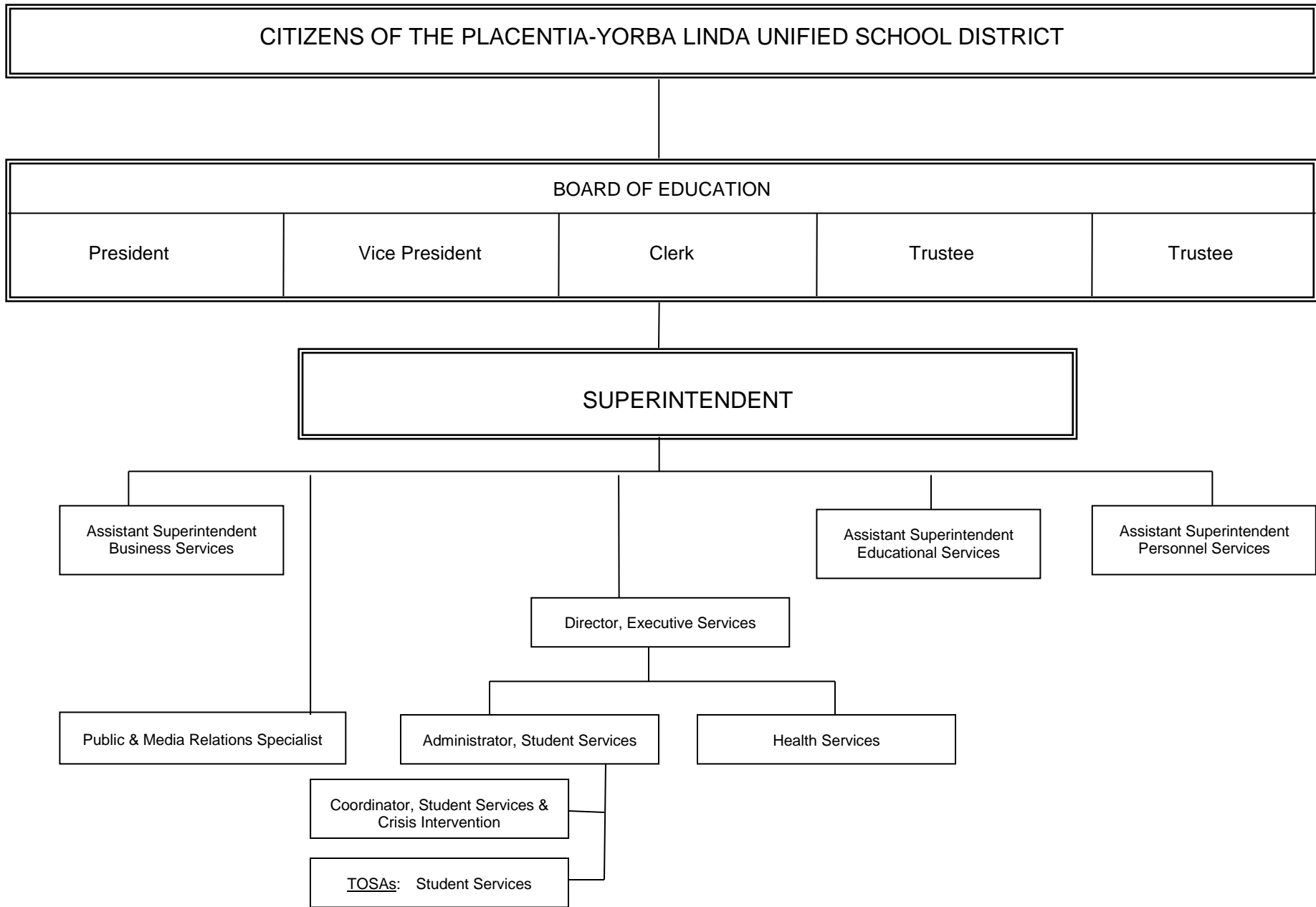
## **ORGANIZATIONAL UNITS AND STRUCTURAL RELATIONSHIPS**

The general administrative organization of the district shall be known as the single executive type of school administration with the Board of Education as the governing body and with all activities under the direction of the superintendent of schools.

Organization and function charts for the district shall be prepared by the superintendent and approved by the Board of Education to designate clearly the relationships of all employees within the district organization. The organization and function charts shall be updated periodically and changes shall be approved by the Board of Education.

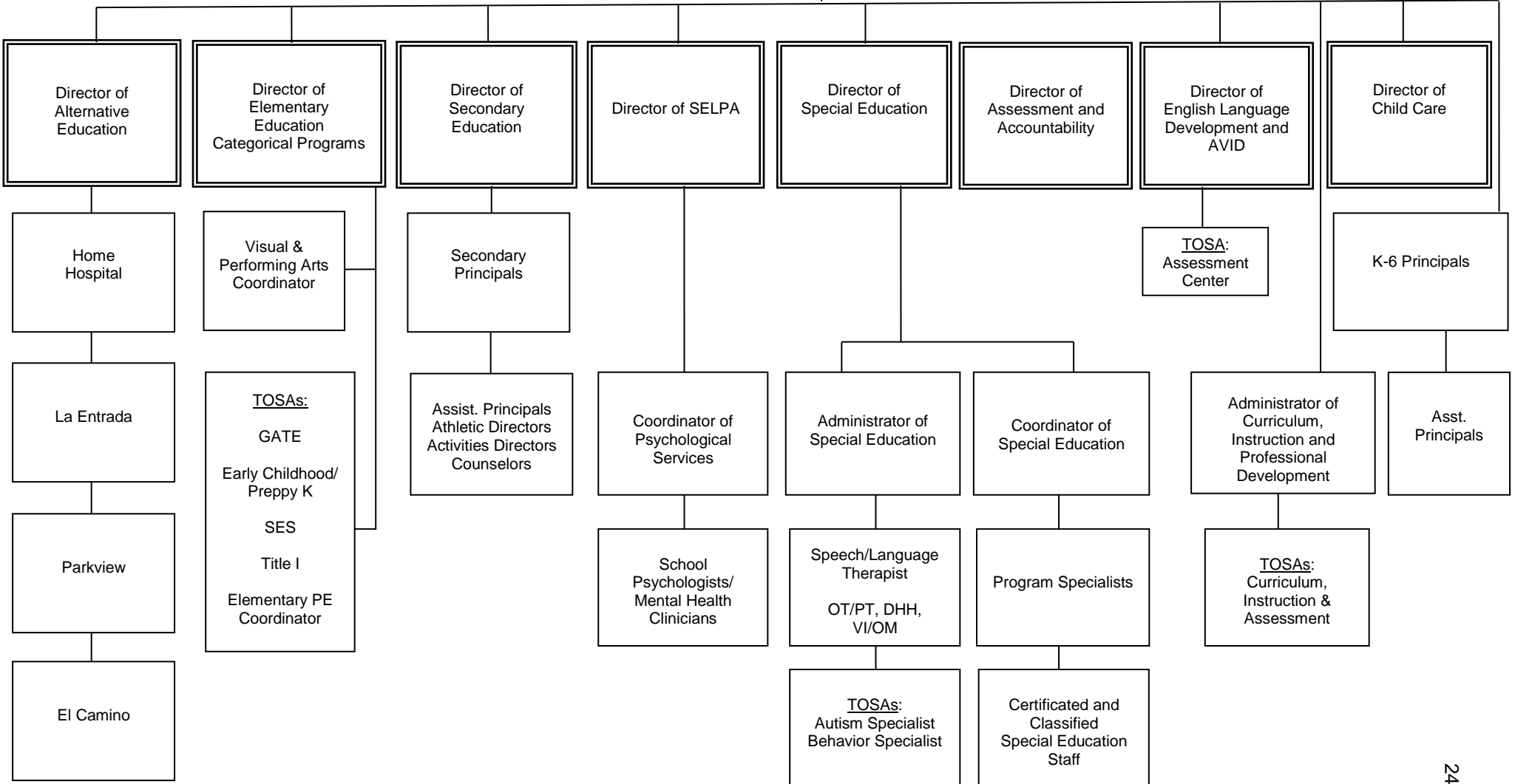
LEGAL REFERENCE: Education Code      Section 35015  
    Section 35020  
    Section 35035

Policy adopted: 3/28/77  
Policy revised: 2/11/14

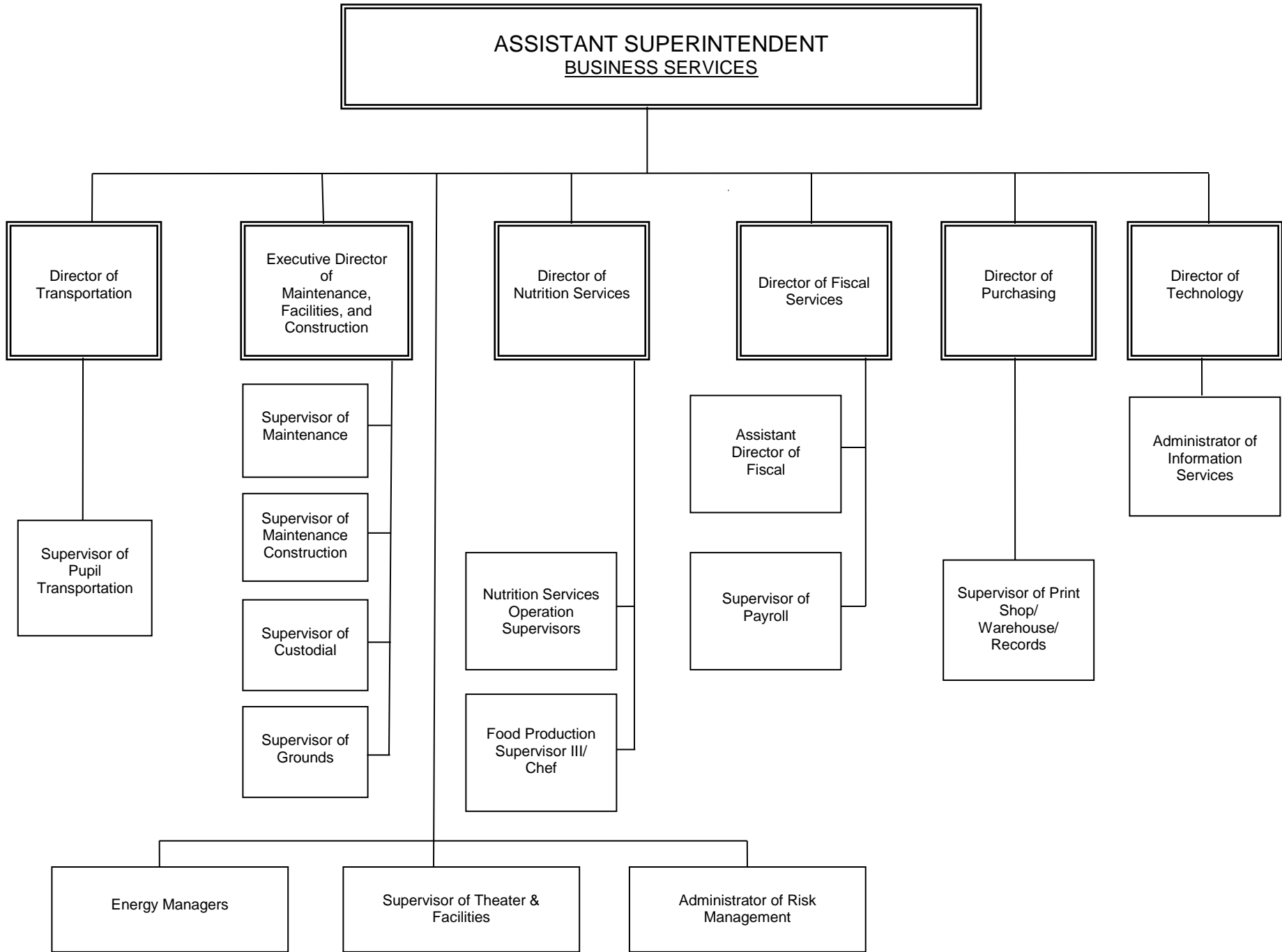


**2015 – 2016 ORGANIZATIONAL CHART**

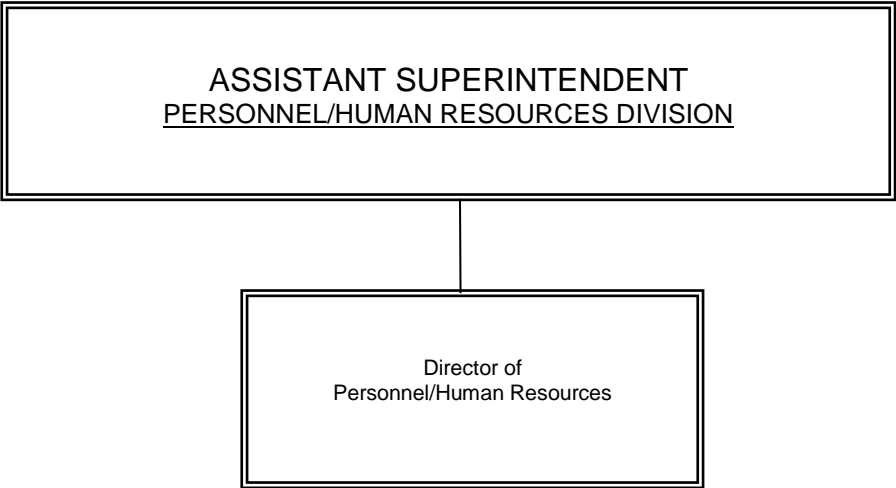
ASSISTANT SUPERINTENDENT  
EDUCATIONAL SERVICES DIVISION



2015 – 2016 ORGANIZATIONAL CHART



2015 – 2016 ORGANIZATIONAL CHART



**2015 – 2016 ORGANIZATIONAL CHART**